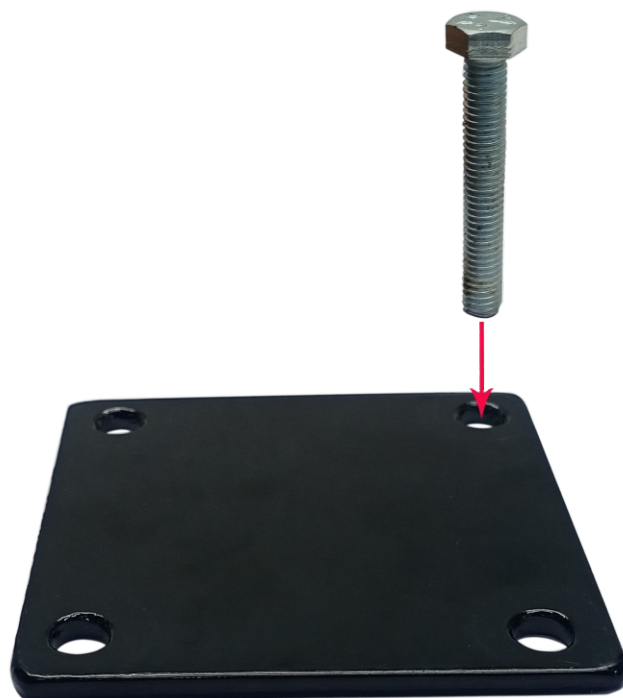


STEP 1



STEP 2



STEP 3





STEP 4



Instructions for Using the Crucible with Whip Handle and Pouring Handle

Equipment Needed:

- Crucible with Whip Handle
- Pouring Handle
- Furnace
- Safety Gear (gloves, safety glasses, apron)
- Key (for tightening nuts/bolts)
- Electronic tape

Steps:

1.Preparation:

- Gather all necessary tools.
- Wear protective gear.
- Tighten all nuts/bolts with the provided key before use.

2.Attach the Whip Handle:

- Securely attach the whip handle to the crucible.

3.Preheat the Furnace:

- Heat the furnace to the required temperature for your material.

4.Insert Crucible:

- Using the whip handle, carefully place the crucible into the furnace.

5.Monitor Melting Process:

- Observe the material as it melts, adjusting temperature as needed.

6.Position the Flask:

- Center the flask below the pouring station before melting the metal.
- Apply electronic tape at the joining ends of the flask while pouring for added safety.

7.Using the Pouring Handle:

- Once the material is molten, attach the pouring handle to the crucible.
- Practice handling to ensure smooth and controlled pouring.

8.Pour the Molten Material:

- Carefully pour the molten material into the flask using the pouring handle.

9.Cool Down:

- Allow the crucible and handles to cool before cleaning and storing.